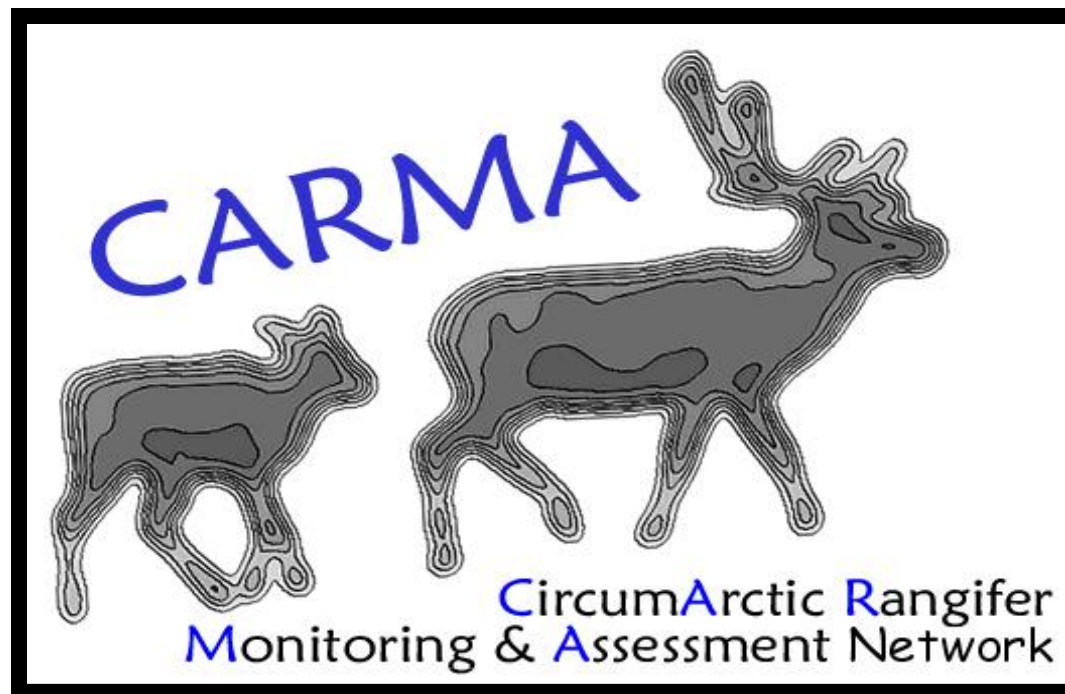


WELCOME TO CARMA 9!

“Planning for Caribou Recovery in a Changing Landscape”



Sponsors!



Porcupine Caribou
Management Board



Very Brief History

CARMA 1: Official launch in 2004



.... CARMA 8, 2012

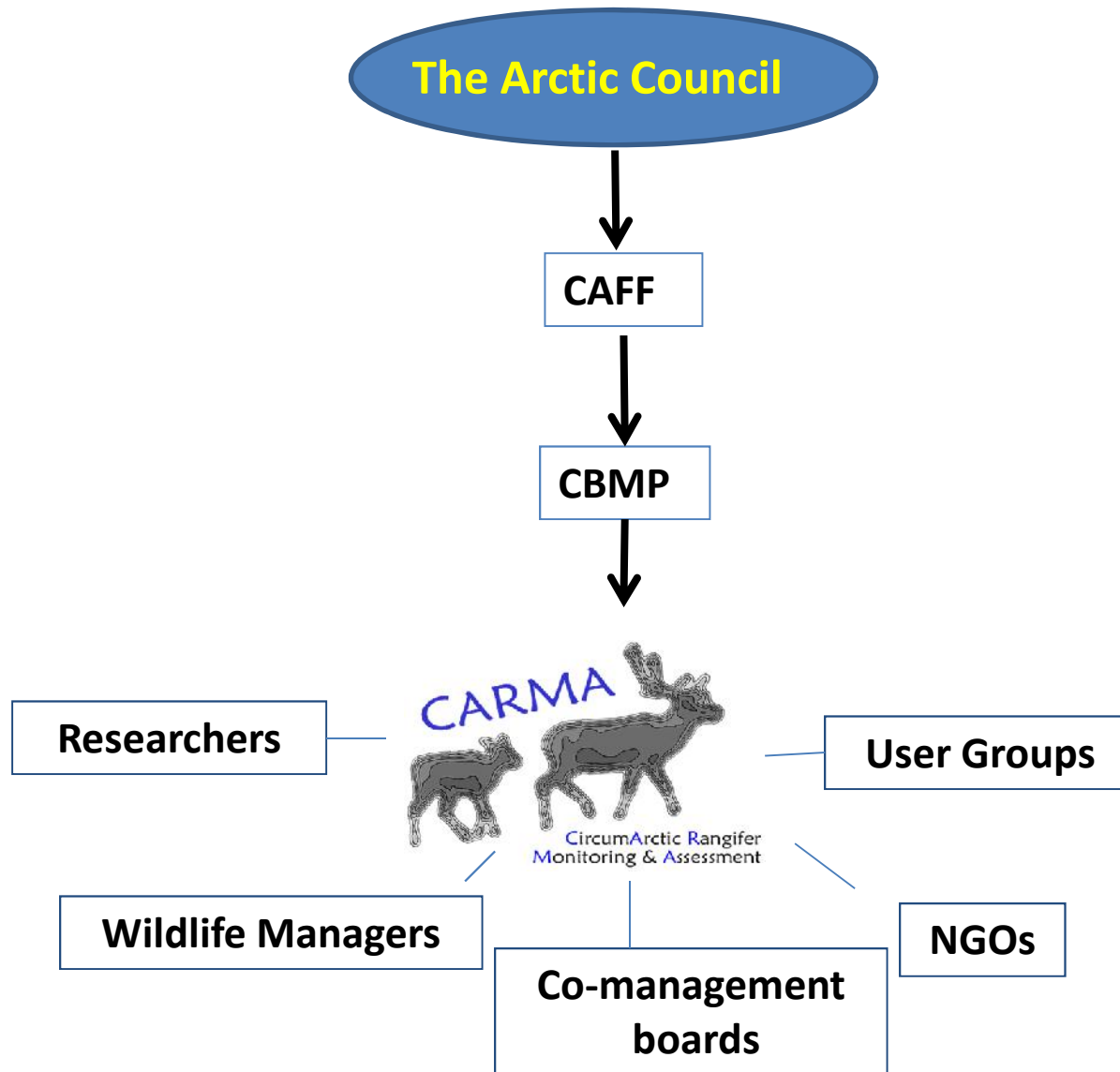


What we are...

- CARMA's mission is to:

Monitor and assess the impacts of global change on Human-Caribou systems across the circumarctic, through cooperation, both geographically and across disciplines.

CARMA can be viewed as a link from the international to the local?



Recent CARMA activities

- Climate database
- Caribou Cumulative Effects Assessment
- Arctic Council's State of the Arctic Report

House-keeping items

- Lunches provided
- Kelsey Russell – talks and posters
 - Access to talks and posters?
 - Travel expenses
- Breakout rooms – 4 Breakout Groups; 3 Breakout sessions – see # on name tag
- Breakout “leaders”
- Poster intros, setup and session

Meeting Format

- **Session 1:** Changing Landscapes - “natural”
– *Breakout Group 1*
- **Session 2:** Changing landscapes: Human-derived changes
– *Breakout Group 2*
- **Session 3:** Strategies and Planning tools
– *Breakout Group 3*
- **Session 4:** What we’ve learned and future of CARMA

1	Alison Thompson
1	Anna Pestereva
1	Cheryl Wray
1	Deana Lemke
1	Don Spalinger
1	Jeffrey Hart
1	Mike Settington
1	Leslie Wakelyn
1	Mary Gamberg
1	Susan Kutz
1	Jan Adamczewski
1	Kyle Russell

2	Ernest Pokiak
2	Jill Johnstone
2	Jody Illasiak
2	Kaitlin Wilson
2	Katherine Parker
2	Kaytlin Cooper
2	Melanie Lancaster
2	Mike Suitor
2	Kim Poole
2	Richard Gruben
2	Marianne Singaas
2	Nuka Lund

3	Joseph Judas
3	Brandon Laforest
3	Fiona Schmiegelow
3	Ivan Mizin
3	Sabrina Plante
3	Jody Pelissey
3	Joelle Taillon
3	Don Reid
3	Olav Strand
3	Colin Daniel
3	Kelly Milner
3	Jared Gonet

4	Vincent Brodeur
4	Andrey Petrov
4	Danny Gordon
4	Mike Gillingham
4	Jeffrey Tulugak
4	Joe Ashevak
4	Shannon Stotyn
4	Justina Ray
4	Larry Adjun
4	Leonid Kolpashikov
4	Robert White
4	Wenjun Chen