

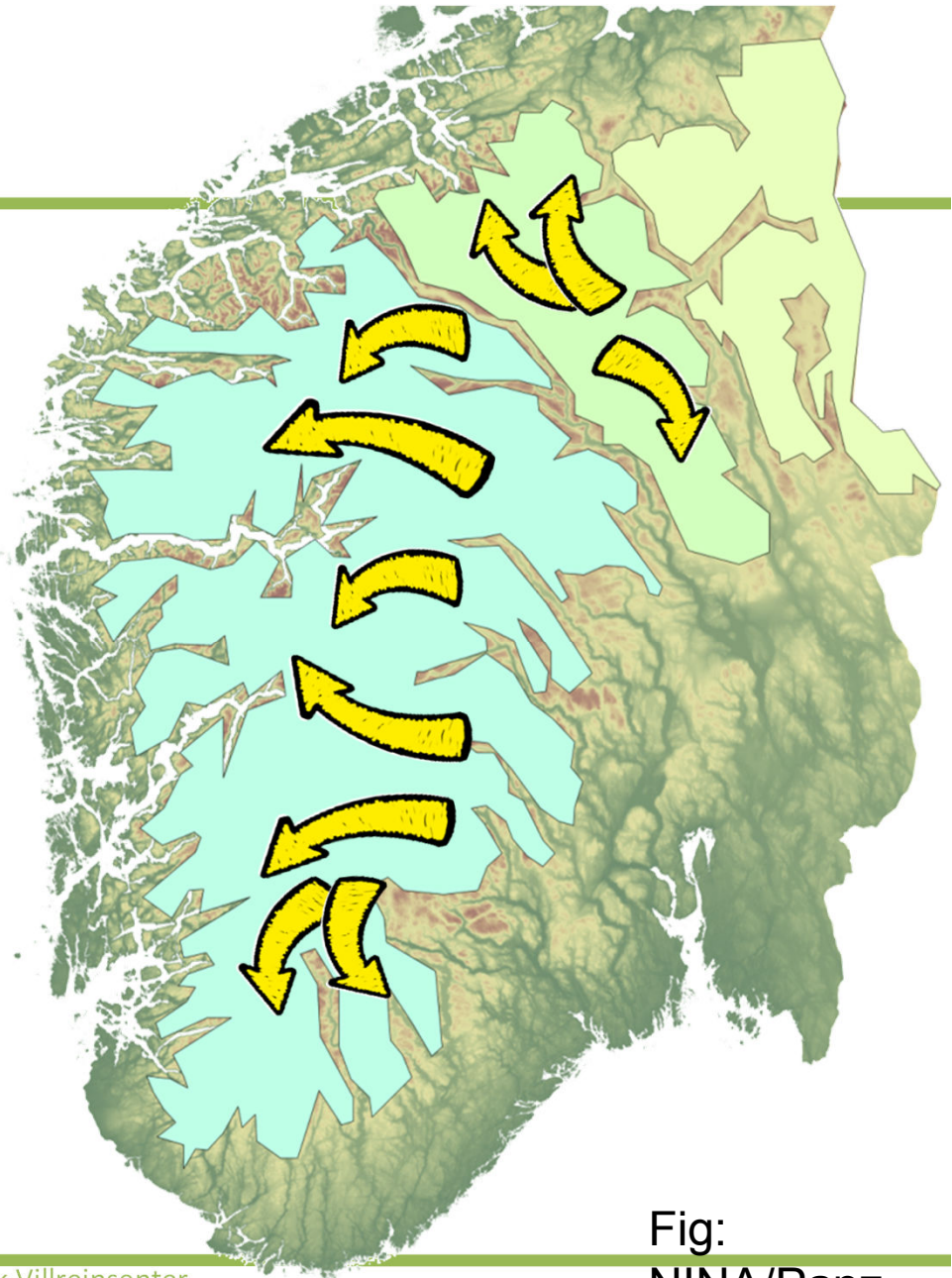


-The Norwegian Wild Reindeer Foundation-

Tools and arenas for wild reindeer management
in a fragmented landscape
-Norway's experience

Dr. Marianne Singsaas
CEO

- Wild reindeer distribution and migrations before 1950
- Based on archaeological findings
- The "Serengeti" of Norway



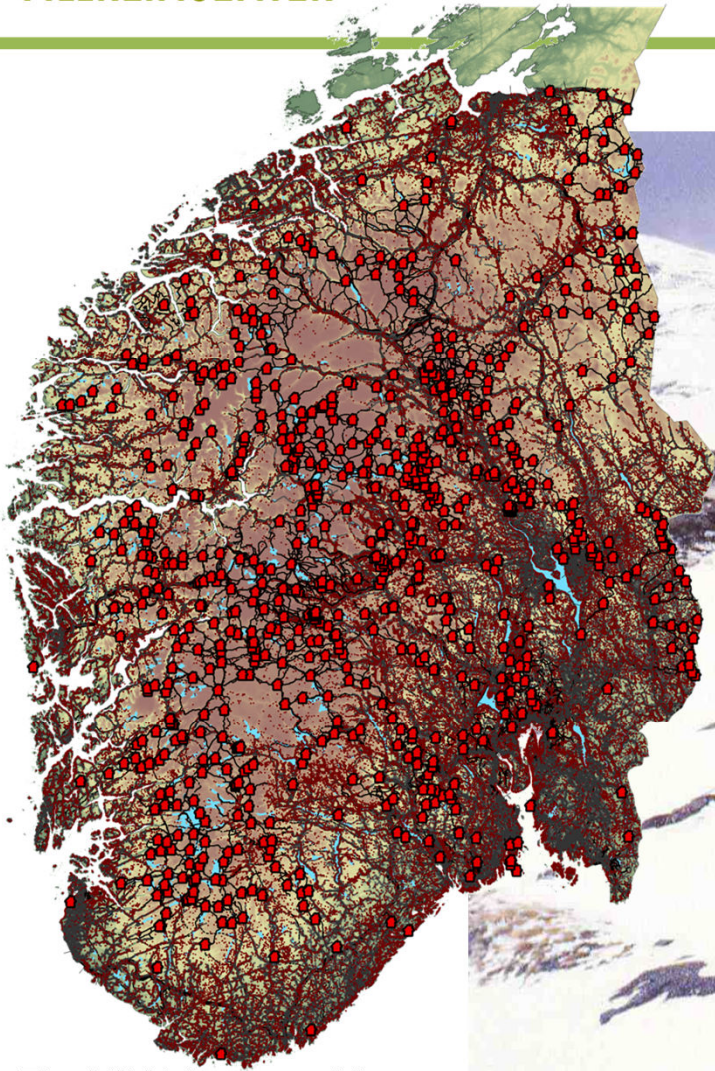
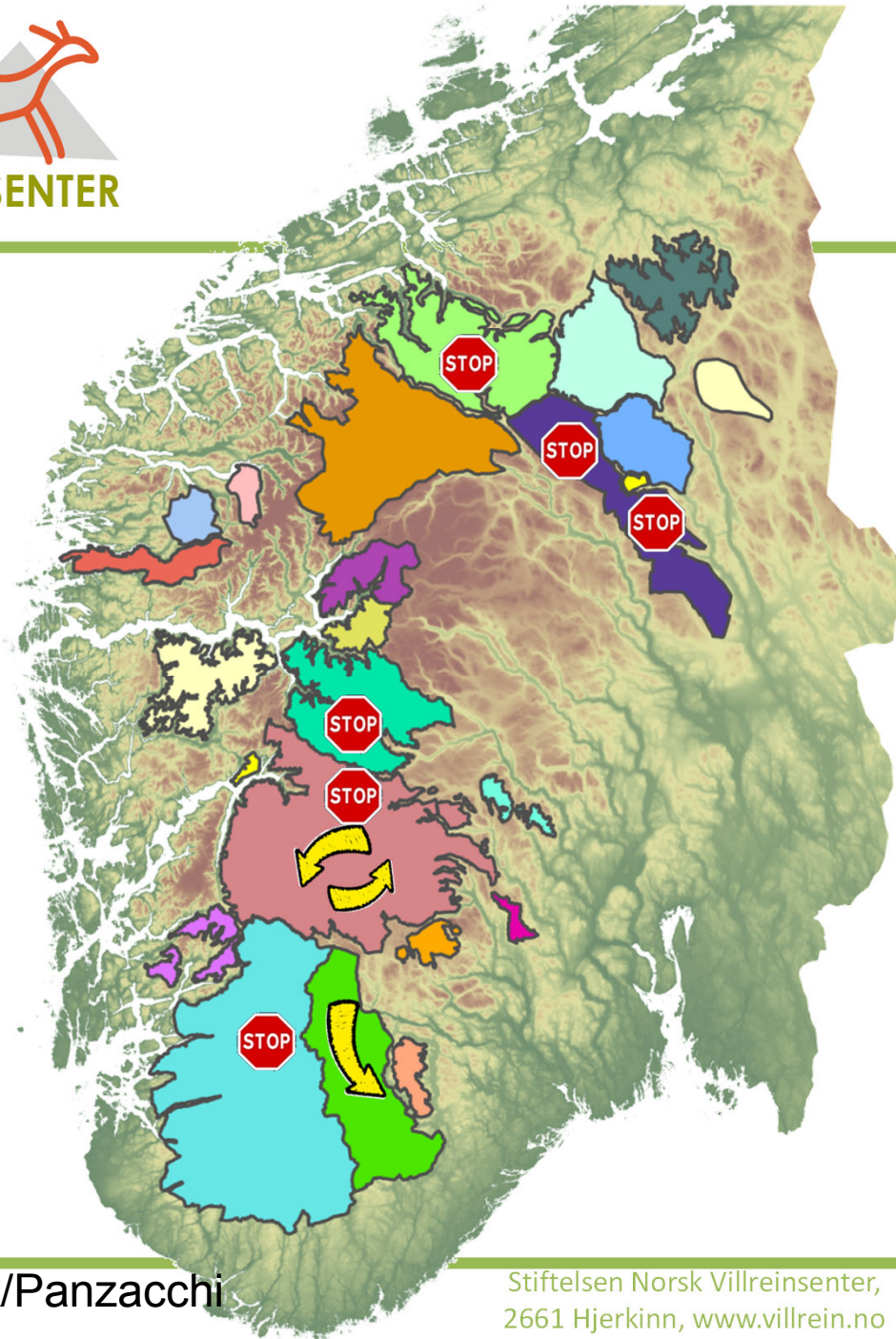


Fig: NINA/Panzacchi



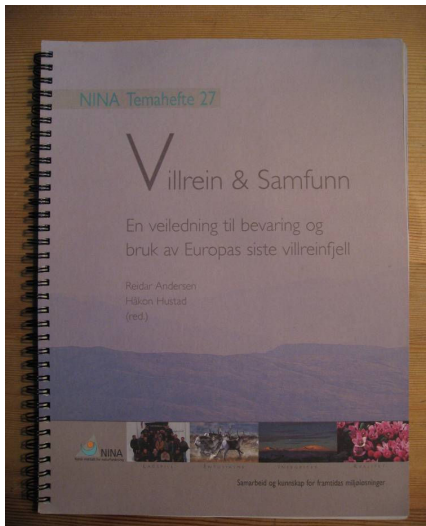
Photo : Sverre Tveiten/SNO



Today: 23 isolated
populations
Few migrations left
Largest herd=10,000
animals

Fig: NINA/Panzacchi

A new framework for wild reindeer management in 2005



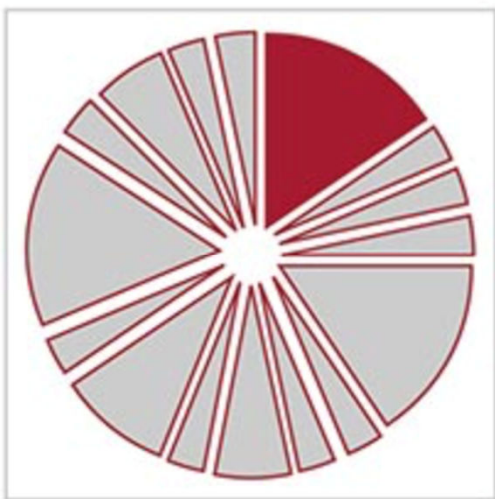
- Moving from an adaptive and expert-driven population based management towards a new framework, focusing on management of larger units of reindeer habitat, more stakeholder involvement, intersectoral cooperation, and enhancement of non-consumptive values of reindeer

VISA –Wild
Reindeer and
Society 2004-
2005

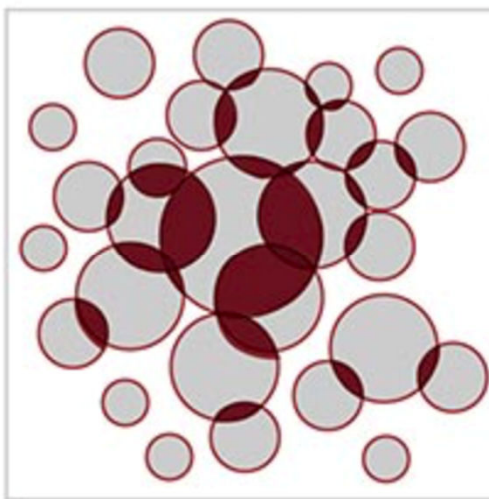
- The establishment of the Norwegian Wild Reindeer Foundation in 2006

The fragmented government

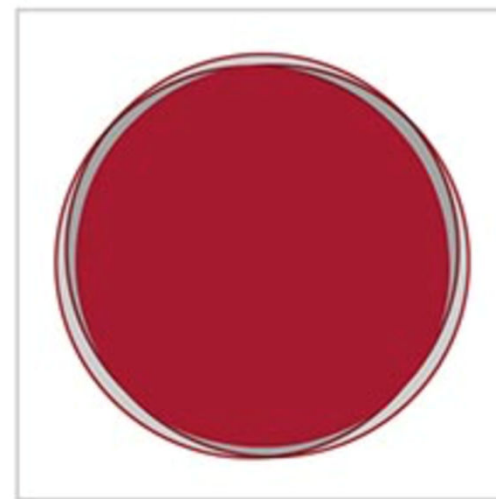
Fragmentation



Overlap



Duplication

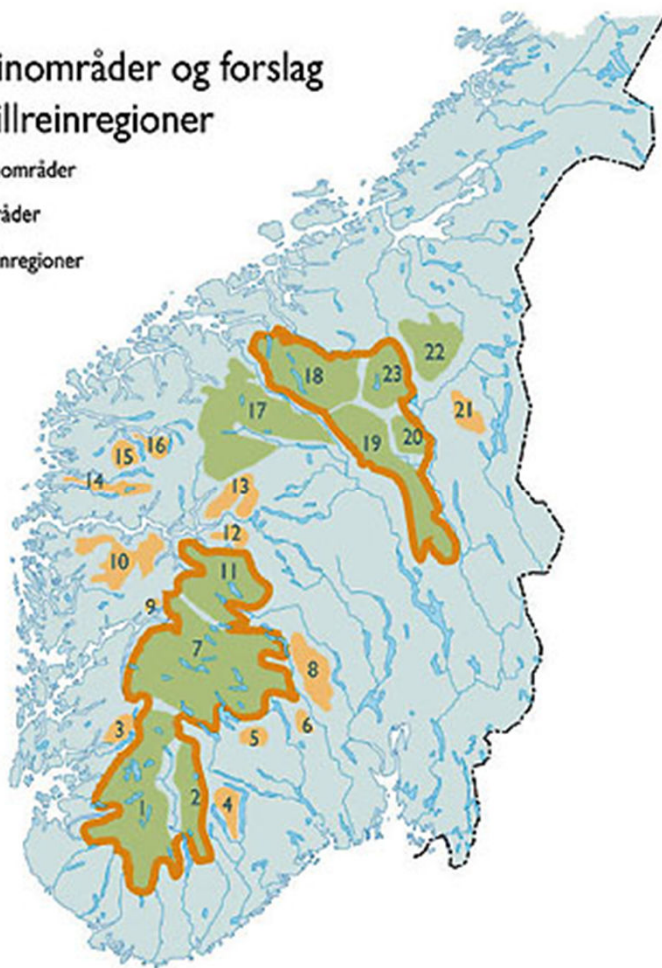


Regional land use plans for wild reindeer mountains

Nasjonale villreinområder og forslag til europeiske villreinregioner

- Nasjonale villreinområder
- Andre villreinområder
- Europeiske villreinregioner

- 1 Setesdal Ryfylke
- 2 Setesdal Austhei
- 3 Skaulen Etnesfjell
- 4 Våmur - Roan
- 5 Brattefjell - Vindeggen
- 6 Blefjell
- 7 Hardangervidda
- 8 Norefjell - Reinsjøfjell
- 9 Oksenhalvøya
- 10 Fjellheimen
- 11 Nordfjella
- 12 Lærdal - Årdal
- 13 Vest - Jotunheimen
- 14 Sunnfjord
- 15 Ferdefjella
- 16 Svartebotnen
- 17 Ottadalsområdet
- 18 Snohetta
- 19 Rondane
- 20 Solinketten
- 21 Tolga Østfjell
- 22 Forollhogna
- 23 Knutsho



Environmental quality norm for wild reindeer

www.nina.no

1400 Miljøkvalitetsnorm for villrein

NINA Rapport

Forslag fra en ekspertgruppe

Morten Kjørstad, Siri Wølneberg Bothun, Vegard Gundersen, Øystein Holand, Knut Madslien, Atle Mysterud, Ingrid Nerhoel Myren, Tor Punsvik, Knut H. Røed, Olav Strand, Torkild Tveraa, Hans Tømmervik, Bjørnar Ytrefhus & Vebjørn Veiberg (red.)

Norsk institutt for naturforskning

Skala for klassifisering

God
Middels
Dårlig

Godkjent

Ikke godkjent

Figur fra rapporten.

How to facilitate collective action?

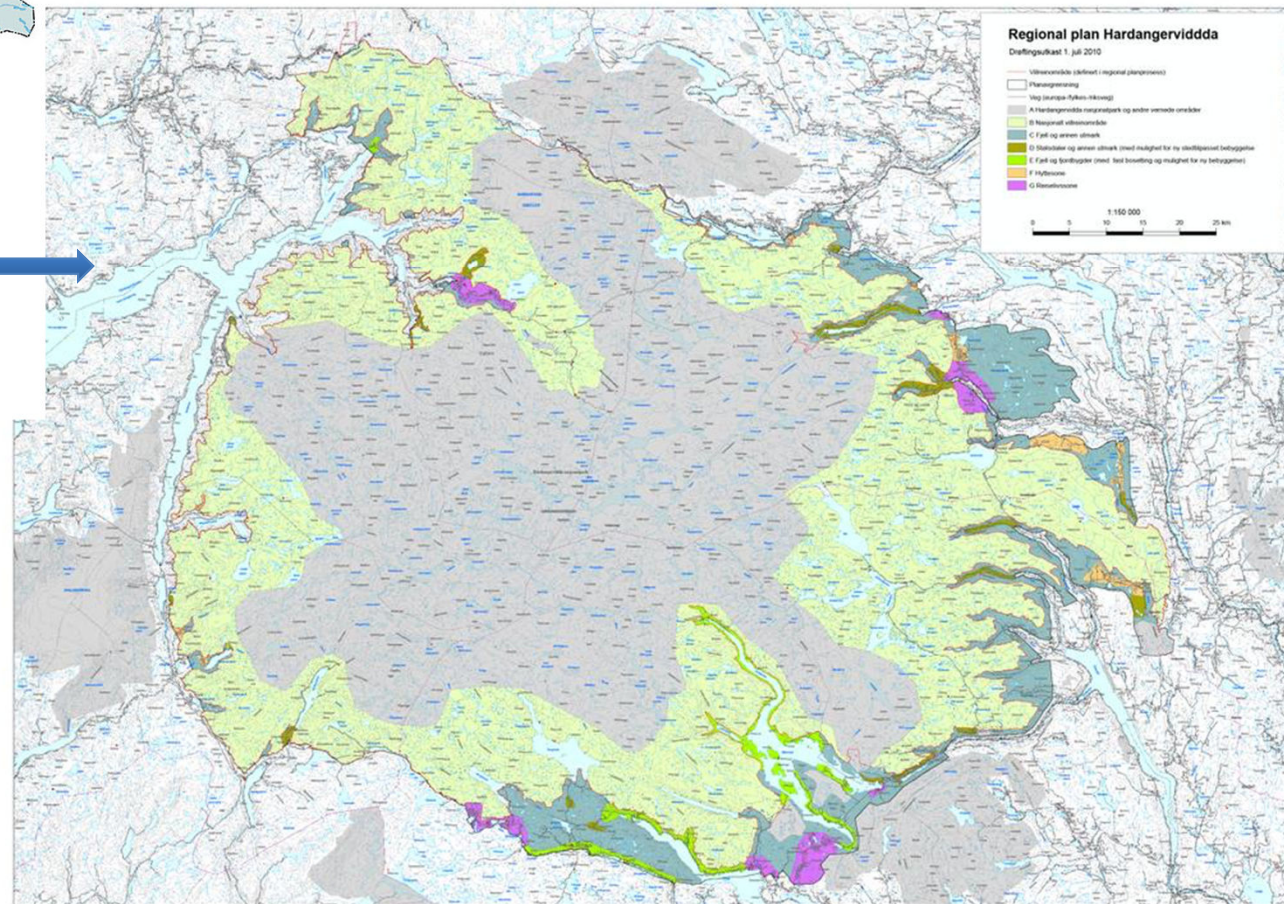


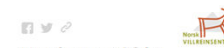
Example: The Hardangervidda

Nasjonale villreinområder og forslag til europeiske villreinregioner

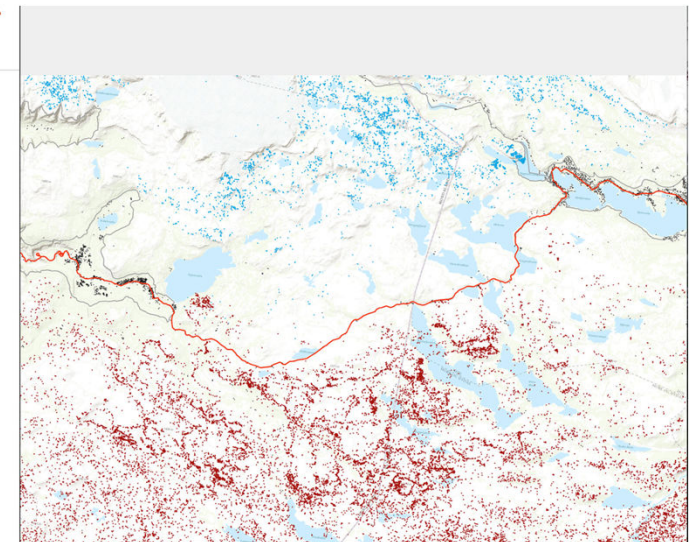
Nasjonale villreinområder
Andre villreinområder
Europeiske villreinregioner

- 1 Sevedal Ryfylke
- 2 Sevedal Austhei
- 3 Skauhei Etnafjell
- 4 Vismur - Roan
- 5 Brattefjell - Vindeggen
- 6 Blefjell
- 7 Hardangervidda
- 8 Nordfjell - Romsfjell
- 9 Oksenhalvøya
- 10 Fjellheimen
- 11 Nordfjella
- 12 Lørdsal - Åndal
- 13 Voss - Jernheimen
- 14 Sunnfjord
- 15 Forderfjella
- 16 Svartedalen
- 17 Ottadalsområdet
- 18 Snøhesta
- 19 Rindane
- 20 Skjoldstøen
- 21 Tolga Østfjell
- 22 Forollhogna
- 23 Krushe



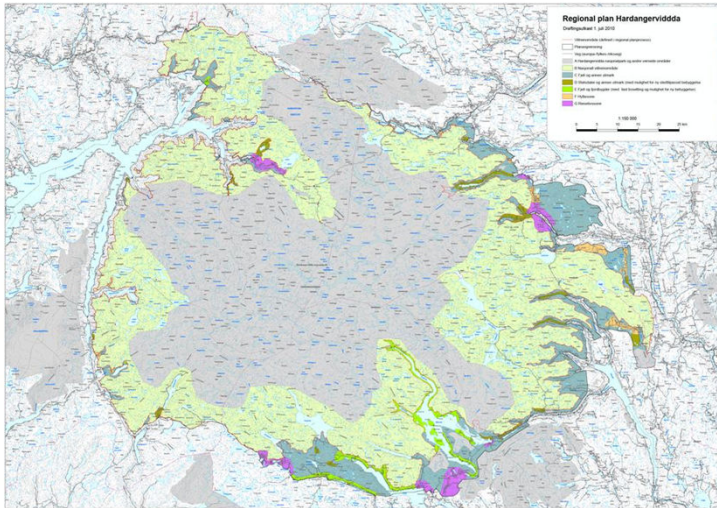


Effektene av Rv7 på villrein og mulige avbøtende tiltak og effekter av disse er behandlet i flere rapporter (Bevanger m fl. 2005, Strand m. fl 2006 og Strand m fl. 2015).



Relationship resources

- Building adaptive capacity through collaborative R&D projects





Agents of change

