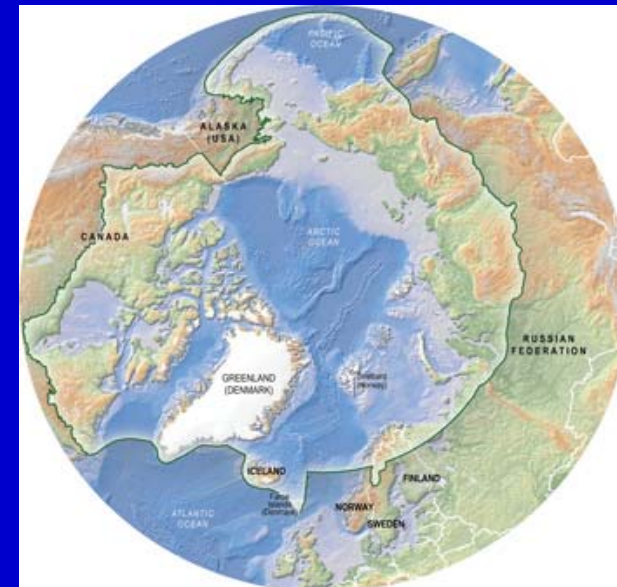




ARCTIC COUNCIL

- 1996 - to promote cooperation, and coordination among the Arctic States
- Canada, Denmark/Greenland/ Faroe Islands, Finland, Iceland, Norway, Sweden, The Russian Federation, USA.
- Permanent Participants: Aleut International Association, Arctic Athabaskan Council, Gwich'in Council International, Inuit Circumpolar Council, Russian Association of Indigenous Peoples of the North and the Saami Council





Arctic Flora and Fauna (CAFF)

- CAFF monitors arctic biodiversity
- Greening of the Arctic (GOA) project - 24 year NDVI record; linked to Circumpolar Arctic Vegetation Map (CAVM)
- Arctic Council asked CAFF to respond to ACIA



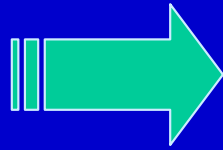
Arctic Climate Impact Assessment



CAFF's response to ACIA: Circumpolar Biodiversity Monitoring Programme (CBMP)



Circumpolar
Biodiversity
Monitoring
Programme (CBMP)

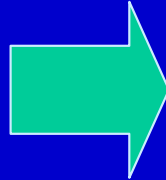


contribute to circumpolar
biodiversity assessments
Established or recognized
networks such as CARMA



Circumpolar Biodiversity Monitoring Programme (CBMP)

includes *CARMA*



- 2010 Biodiversity Assessment
- 2012 Science report
- 2013 Recommendations



Arctic Report Card

- The annual Arctic Report Cards
- summarize recent trends
-

