

Body condition and health indicators across herds

- Synthesis volume for the Arctic Journal
- Paper #2
 - Monitoring Caribou and Reindeer (*Rangifer tarandus*) body condition and parasites: A synthesis of the CARMA experience
 - Under Susan Kutz's supervision
 - In conjunction with CARMA collaborators
 - Mainly from North America
 - Looking to extend the scope



Body condition and health indicators across herds

VARIABLES OF INTEREST

- Body condition index
 - Morphometrics
 - Fat reserves (Back fat, kidney fat and/or metatarsal bone marrow)
 - Protein reserves (Gastrocnemius or peroneus weights)
- Number of parasites and cysts
 - Field data
 - Laboratory results

VARIABLES PRESENTED ACCORDING TO RISK FACTORS

- Herd, age and gender
- Pregnancy and lactation status (females)
- Year and season of sampling



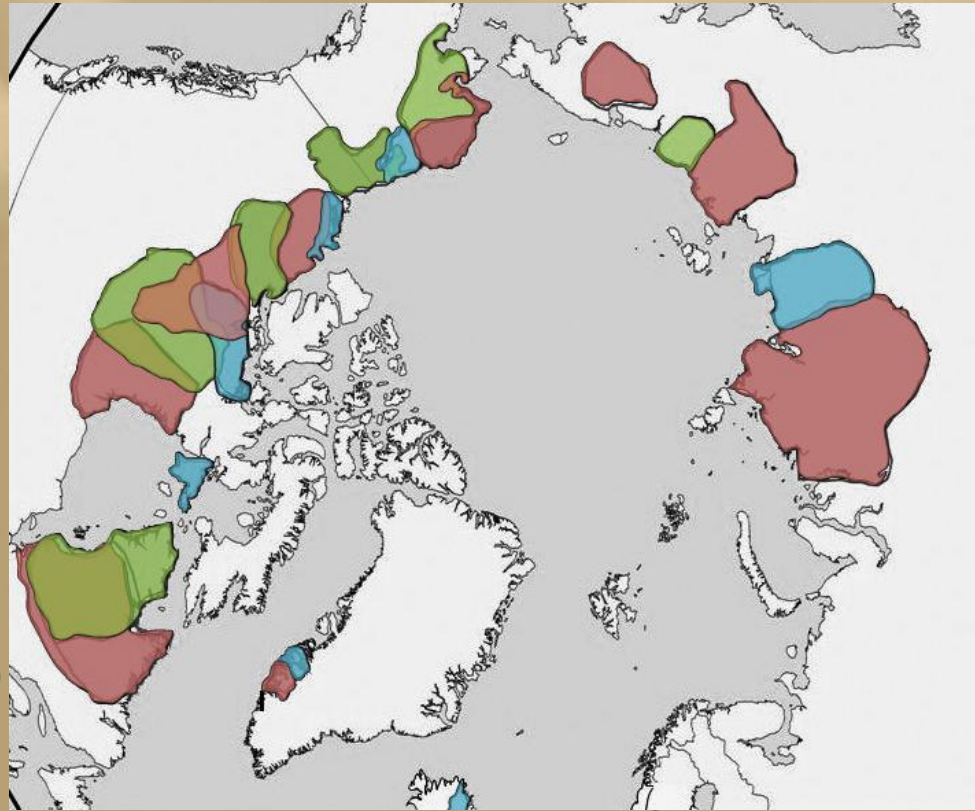
Would you like to collaborate ?

United States (Alaska) (n=?)

- Central Arctic
- Western Arctic
- Teshekpuk Lake
- Porcupine

Canada

- **Ahiak (n=36)**
- Bathurst (n=150)
- Beverly/Qaminirjuaq (n=56)
- Bluenose West (n=66)
- Cape Bathurst (n=14)
- Porcupine (n=25)
- **Rivière-aux-Feuilles (n=177)**
- **Rivière-George (n=178)**
- Southampton Is. (n=64)
- Tuk Pen (n=7)



Greenland

- Akia-Maniitsoq (n=46) and Kangerlussuaq-S. (n=62)

Russia (n=?)

- Taimyr
- Chokokta
- Lena-Olenyk
- Sundrun
- Yana Indigurka

Norway (n=?)

Iceland

Finland (n=?)

Germany (n=?)

