

# Web – One Stop Shopping

CARMA 7



# Vision



# Vision

- Central hub
- Up to date
- Searchable (library)
- Collaborative
- “Not a news site”
- Expandable to meet new needs



New this year



# New this year

- Updates to menu structure
  - Past events/coming events
  - People
  - Conference subpage



- State of Herd Pages
  - Many updated in 2010

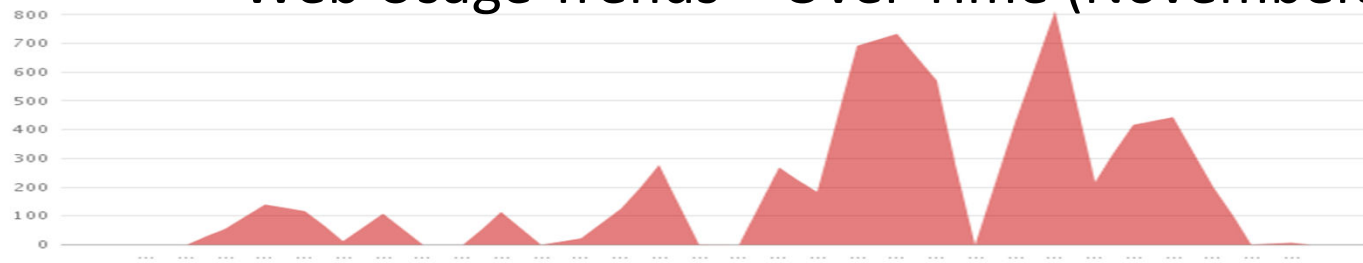


- State of Project Pages
  - Few updated in 2010

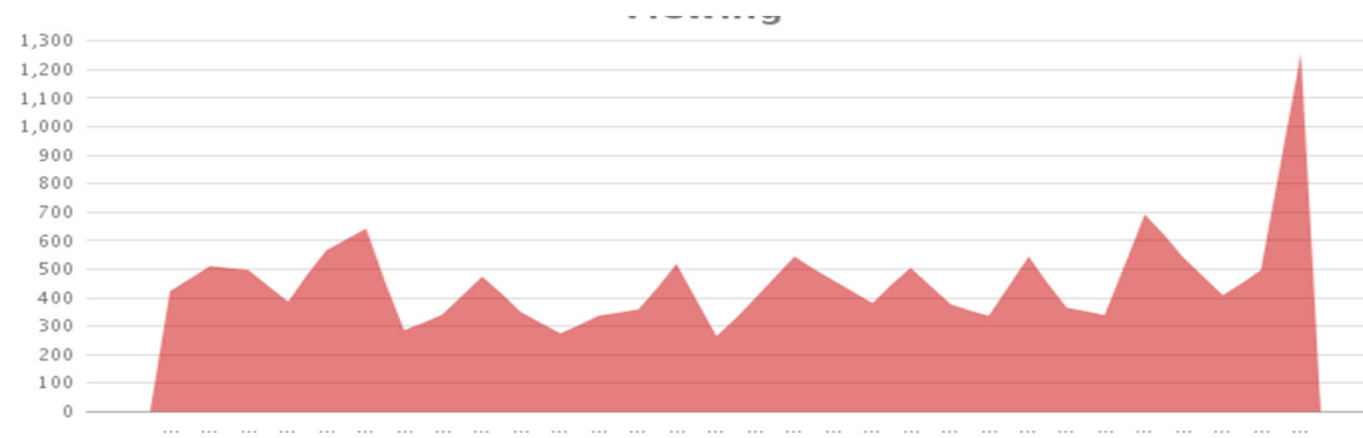


## Web Usage Trends – Over Time (Novembers)

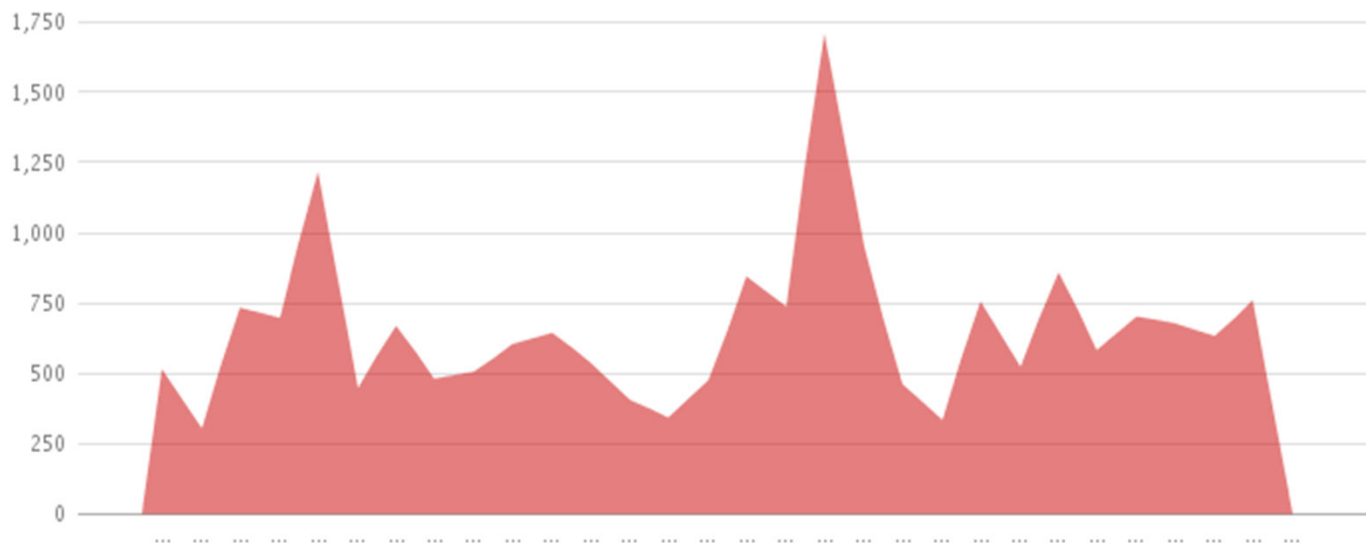
2008



2009



2010



# Multiple paths to update

- Do it yourself
  - Training document available
- Forward to web-coordinator – use [askcarma@gmail.com](mailto:askcarma@gmail.com)



# Where are we going?





# Where are we going?

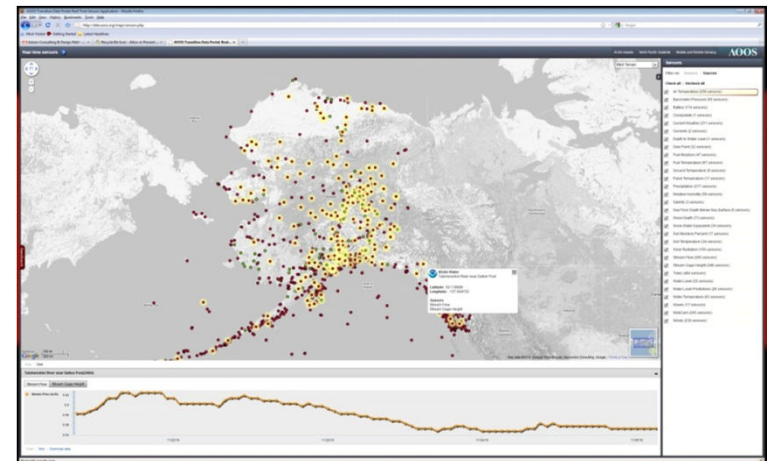
- Support CARMA funding efforts
- Support “Synthesis Project”
- Research purposes
- Related tools – newsletter, CARMA newsletter mail list



The screenshot displays the AOSOS Transition Data Portal interface. The main map shows the Arctic region with numerous sensor locations marked by colored dots. A pop-up window provides details for the NOAA Water sensor at the Tashkensk River near Dufur Post, including its latitude (63.110889) and longitude (-137.884732). The right sidebar lists various sensor types, such as Air Temperature, Barometric Pressure, and Salinity. The bottom section features a time-series plot showing Stream Flow (cfs) and Stream Gage Height (m) from 11/22/18 to 11/26/18.

# Spatial Portal - What it is

- Map-based view of data
- Time components
- Example – Sea Bird Data
  - Explore and access real time sensor feed platforms by parameter
  - Data feeds pulled from:
    - Eight sources
    - ≈ 3,000 stations
    - ≈ 4,500 sensors



# Spatial Portal – CARMA Needs

- Preliminary work in 2010
- Provide access to more CBMP/CARMA Datasets
  - Habitat descriptions
  - Circumpolar Vegetation Maps
  - Circumpolar climate models
- Expand platform for Circumpolar Specific Needs
  - Polar stereoscopic projections (Polar Views of Data Sets)
  - Tools for data analysis

# Questions for Breakouts

- What are our messages?
  - To the network
  - To potential funders
  - To the public
- How to keep web current?
- What should the web-view be of completed projects?
- Importance of spatial portal?
- Limits on resources to keep web current?